

Thermostatic MIXING VALVES ECO-MIX™

Cabinet Assemblies

XL-186-32A-_____LF

- Thermostatic water mixing valve
- ¾" inlets and outlet
- Minimum flow 1 GPM (3.8 LPM) +
- Copper encapsulated thermostatic assembly with Stainless Steel shuttle
- Combination checkstops, wall support
- Locking temperature regulating handle
- Tempered outlet ball valve
- Color coded dial thermometer (0 to 140°F, -10° to 60°C)
- Temperature adjustment range, 90-140°F (32-60°C) **
- Cabinet, with door, left hand hinge, cylinder lock
- Bottom inlets, top outlet
- Factory assembled and tested
- Rough bronze finish

ASSE 1017 CERTIFIED



OPTIONS:

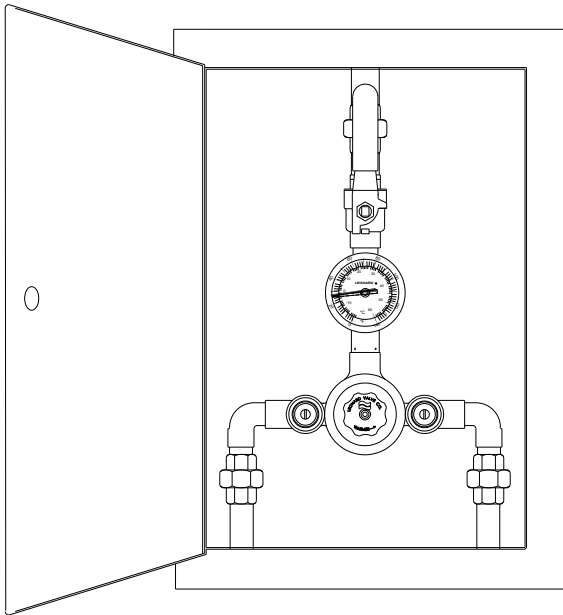
- SUFFIX BWE REC- Steel cabinet, baked white enamel recessed
- SUFFIX STSTL REC- Stainless Steel recessed cabinet
- SUFFIX BWE EXP- Exposed cabinet, baked white enamel
- SUFFIX STSTL EXP- Exposed cabinet, Stainless steel
- SUFFIX SEMI- Semi-Recessed frame
- SUFFIX RHH - Right hand hinge
- SUFFIX TOP- Top inlets
- SUFFIX IT- Inlets thermometers outside of exposed cabinet only (ship loose)
- SUFFIX TC- Test connection outside of exposed cabinet only (ship loose)
- SUFFIX CP- Chrome plated finish
- SUFFIX VIEW- View port

Valve assembly is certified to meet Low-Lead requirements of wetted surface area containing less than 0.25% lead by weight. All other fittings and components, the sum total of which comprise the wetted surface of this product contains less than one quarter of one percent of lead by weight.

Note: Leonard Valve Company reserves the right of product, or design modifications without notice or obligation.



1360 Elmwood Avenue, Cranston, RI 02910 USA
Phone: 401.461.1200 Fax: 401.941.5310
Email: info@leonardvalve.com
Web Site: <http://www.leonardvalve.com>



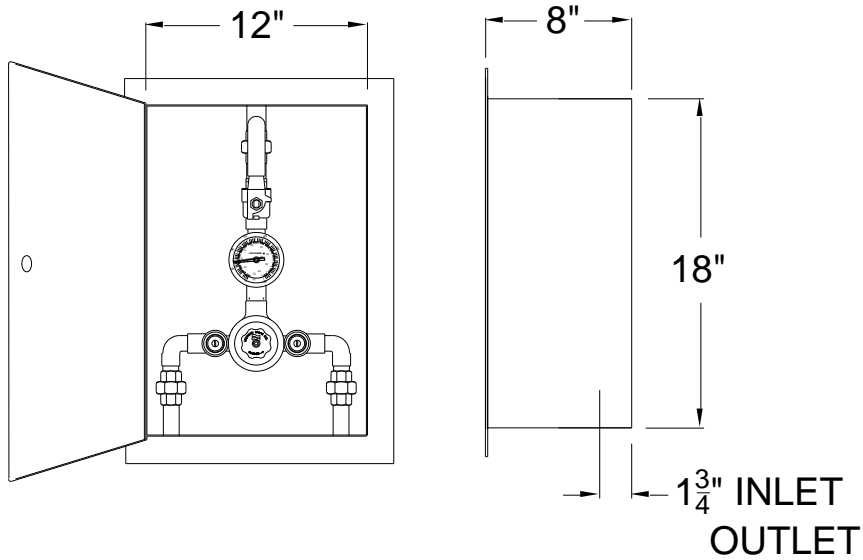
WARNING: This product can expose you to chemicals including lead, which is known to the State of California to cause cancer. For more information, go to www.P65Warnings.Ca.gov

+NOTE: The valve will maintain temperature with 0.5GPM flow from the domestic hot water loop when properly installed near the hot water source with a continuously operating recirculation pump.

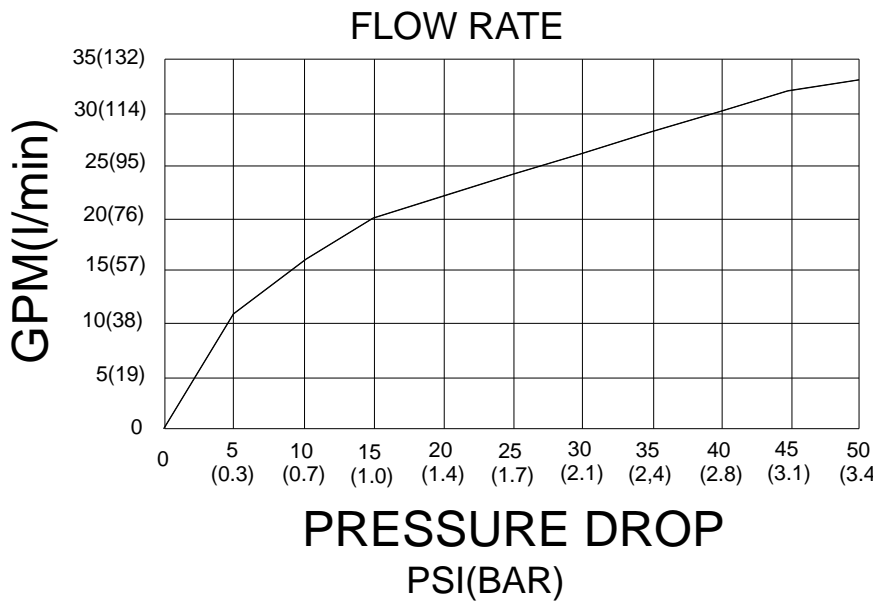
****NOTE:** For temperatures outside of this valve's stated range, please see our line of bi-metal valves.

CAUTION! All thermostatic water mixing valves have limitations. They will NOT provide the desired accuracy outside of their flow capacity range. Consult the Flow Capacity Chart and DO NOT OVERSIZE. Minimum flow must be no less than as indicated.

Engineer's Approval	Job # _____
	Arch/Eng. _____
	Contractor _____



SYSTEM PRESSURE DROP											
MIN+ FLOW	5	10	15	20	25	30	35	40	45	50	PSI
	0.3	0.7	1	1.4	1.7	2.1	2.4	2.8	3.1	3.4	BAR
1	11	16	20	22	24	26	28	30	32	33	GPM
3.8	42	61	76	83	91	98	106	114	121	125	l/min



1360 Elmwood Avenue, Cranston, RI 02910 USA

Phone: 401.461.1200 Fax: 401.941.5310

Email: info@leonardvalve.com

Web Site: <http://www.leonardvalve.com>