

## PNV-125-LF-R1

- Digital Mixing Valve with 1" inlet angled check stops, 1-1/4" Outlet and integral RTD Sensor, return piping assembly
- 1" NPT inlets, 1-1/4" NPT outlet (25mm X 32mm), 1" return
- 0.25 GPM\*\* (.95 L/min) minimum flow capacity
- Maximum operating pressure: 125 PSIG (860 KPA)
- Controls water temperature to  $\pm 2^{\circ}\text{F}$  in accordance with ASSE 1017
- Controls water temperature to  $\pm 2^{\circ}\text{F}$  during times of low / no system demand
- Automatic Hot/Cold Water shutoff upon cold/ hot water inlet supply failure
- User programmable set point range between  $65^{\circ}\text{F}$  and  $180^{\circ}\text{F}$
- UL Listed Control Box
- UL Listed 120V plug in power supply with 6' cord
- Simple/intuitive user commissioning and setup
- Factory assembled and tested

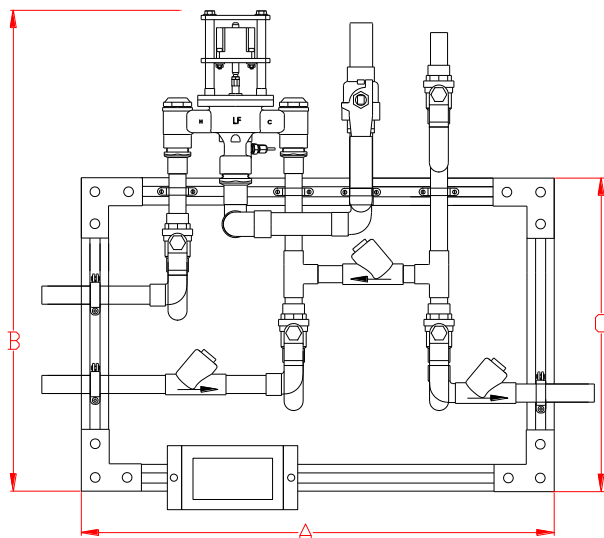
**This product meets Low Lead requirements of wetted surface area containing less than 0.25% lead by weight**

**\*\*NOTE:** The valve will maintain temperature with 0.25 GPM flow from the domestic hot water loop when properly installed near the hot water source with a continuously operating recirculation pump.

### OPTIONS:

\_\_\_\_ **BPS** – Back-up Power Supply, uninterruptable power supply with up to 2 hours run time in case of primary power loss

\_\_\_\_ **R125** – Return line size of 1-1/4" in place of standard 1"



$$A = 28 \pm 4" \quad B = 28" \pm 4"$$

$$C = 18" \pm 4"$$

**NOTE:** Options will change dimensions

### STANDARD CONTROL BOX



### NEW "ENHANCED FEATURE SET" CONTROL BOX

**SEE SELECTABLE OPTIONS PAGE 2**



**This product meets Low Lead requirements of wetted surface area containing less than 0.25% lead by weight**



**WARNING:** This product can expose you to chemicals including lead, which is known to the State of California to cause cancer. For more information, go to [www.P65Warnings.Ca.gov](http://www.P65Warnings.Ca.gov)

**Valve is ASSE 1017 Certified**



**Valve is CSA Certified**



**Valve electronics are UL Certified**



**Product is non-cancellable and non-returnable from date of order with factory. Signed submittal required with purchase order.**

**LEONARD<sup>®</sup>**  
WATER TEMPERATURE CONTROLS

**1360 Elmwood Avenue, Cranston, RI 02910 USA**

**Phone: 401.461.1200 Fax: 401.941.5310**

**Email: [info@leonardvalve.com](mailto:info@leonardvalve.com)**

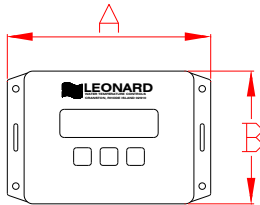
**Web Site: <http://www.leonardvalve.com>**

# PNV-CONTROLLER OPTIONS

## Standard Controller 1.0 Version



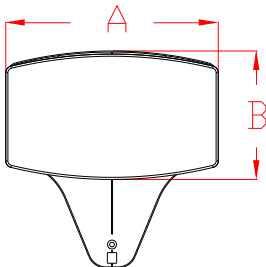
A = 6"    B = 4"  
Depth = 1-3/4"



## Enhanced Controller 2.0, 2.5, 3.0 Versions



A = 8"    B = 4-3/4"  
Depth = 1-1/4"



Leonard Valve Company reserves the right of product, or design modifications without notice or obligation.

## STANDARD CONTROLLER:

\_\_\_\_\_ 1.0 – See PAGE 1 for info

## ENHANCED CONTROLLER OPTIONS:

\_\_\_\_\_ 2.0 – Enhanced Proton Controller with Programmable Disinfection Mode

### Options:

- \_\_\_\_\_ 3T– Three Additional Temperature Sensors for Monitoring of Inlet Hot, Inlet Cold, and Return Temperatures
- \_\_\_\_\_ REL – 5 Relay Contacts that Switch during Alarm State
  - Helpful for Remote Alerts Within Building to Assist Maintenance and Service Personnel
  - 5 Unique States:
    - Loss of Power
    - Broken Temperature Probe
    - “Out of Range” Temperature ( $\pm 10^{\circ}\text{F}$ )
    - Motor Connectivity and Operation
    - Maintenance (Service Required) @ <90% Full travel

\_\_\_\_\_ 2.5 – Enhanced Proton Controller including all of 2.0 as well as BACnet MS/TP Connection which provides ability to serve up all data to BMS system

### Options:

- \_\_\_\_\_ 3T – Three Additional Temperature Sensors for Monitoring of Inlet Hot, Inlet Cold, and Return Temperatures
- \_\_\_\_\_ REL – 5 Relay Contacts that Switch during Alarm State (as shown above)

\_\_\_\_\_ 3.0 – Enhanced Proton Controller including all of 2.5 as well as all items below as standard,

- WiFi – Wifi enabled
- 3T - 3 Additional Temperature Sensors for Monitoring of Inlet Hot, Inlet Cold and Return Temperatures
- REL - 5 Relay Contacts that Switch during Alarm State

\*\*AVAILABLE ON 3.0  $\approx$  2<sup>nd</sup> Quarter 2023  
ASSE LISTING ON 3.0 PENDING



1360 Elmwood Avenue, Cranston, RI 02910 USA

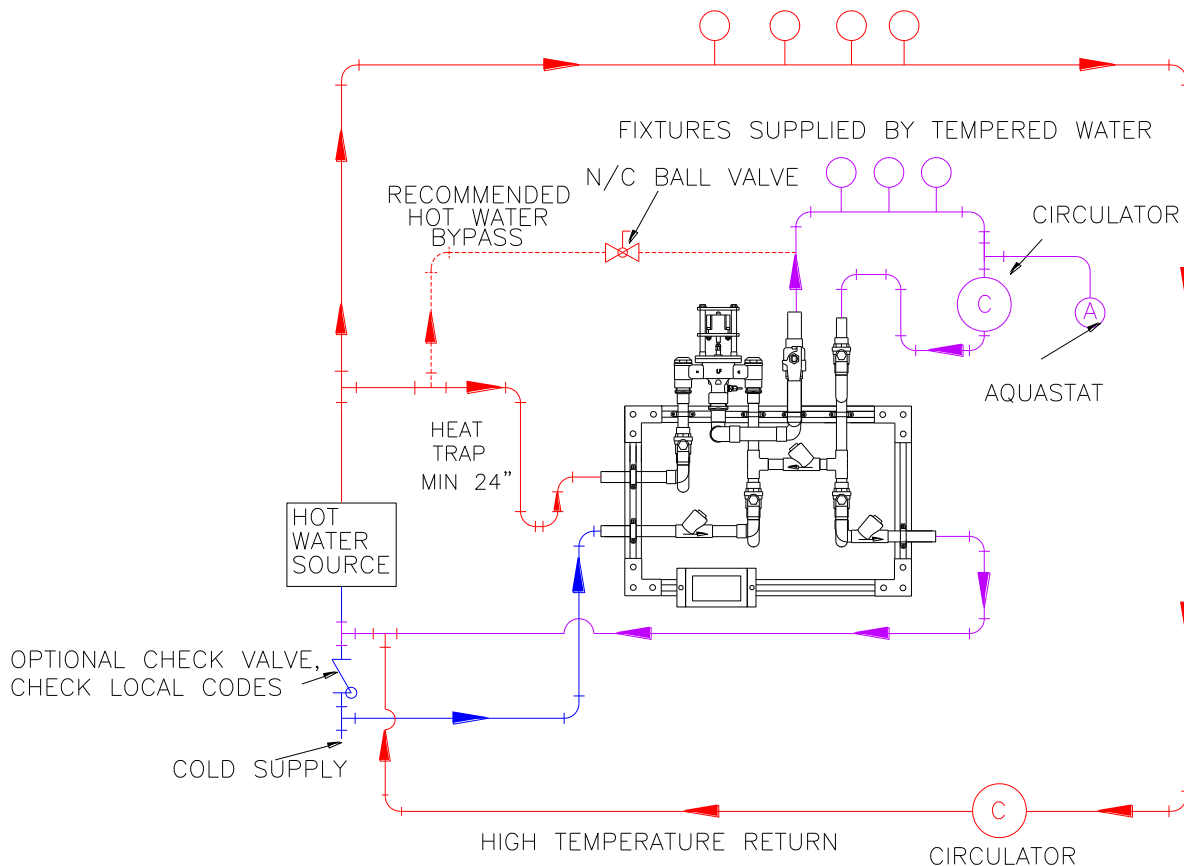
Phone: 401.461.1200 Fax: 401.941.5310

Email: [info@leonardvalve.com](mailto:info@leonardvalve.com)

Web Site: <http://www.leonardvalve.com>

MINIMUM FLOW (GPM)  (l/min)	PRESSURE DROP										
	5	10	15	20	25	30	35	40	45	50	PSI
	.3	.7	.97	1.4	1.7	2.1	2.4	2.8	3.1	3.4	BAR
0.25**	40	56	66	77	86	95	104	109	114	120	GPM
(0.95)**	151	212	250	291	326	360	394	413	432	454	l/min

HIGH TEMPERATURE FIXTURES (IF APPLICABLE)



**CAUTION!** All thermostatic water mixing valves have limitations. They will NOT provide the desired accuracy outside of their flow capacity range. Consult the Flow Capacity Chart and DO NOT OVERSIZE. Minimum flow must be no less than as indicated.

**NOTE:** Flow rates will vary depending on existing field conditions. Leonard Valve Company always recommends using CASPAK® sizing software for proper valve sizing and model number applications.

**Engineer's Approval**

**Job #** \_\_\_\_\_

**Arch/Eng.** \_\_\_\_\_

**Contractor** \_\_\_\_\_

Note: The models shown represent Leonard Products which are believed to be equivalent in type and function to items specified. Leonard Valve Company is not responsible for errors or omissions due to differences in interpretations of information provided.

Note: Leonard Valve Company reserves the right of product, or design modifications without notice or obligation.

**LEONARD®**  
WATER TEMPERATURE CONTROLS

1360 Elmwood Avenue, Cranston, RI 02910 USA

Phone: 401.461.1200 Fax: 401.941.5310

Email: [info@leonardvalve.com](mailto:info@leonardvalve.com)

Web Site: <http://www.leonardvalve.com>